

FINAL



| | | | | |
|--------------|-----------|----|-----------|----------|
| Άρης Νικαίας | 74 | - | 65 | Καλαμάτα |
| 65% | 13 / 20 | FT | 18 / 30 | 60% |
| 38% | 14 / 37 | 2p | 19 / 42 | 45% |
| 42% | 11 / 26 | 3p | 3 / 11 | 27% |
| 42 | 30 - 12 | Rb | 30 - 7 | 37 |
| | 13 | Tu | 15 | |

Referees: Κοσιμπος - Χατζημάρκος



| Each Period | 1st | 2nd | 3rd | 4th |
|--------------|-----|-----|-----|-----|
| Άρης Νικαίας | 8 | 24 | 19 | 23 |
| Καλαμάτα | 14 | 23 | 12 | 16 |

| End of Period | 1st | 2nd | 3rd | 4th |
|---------------|-----|-----|-----|-----|
| Άρης Νικαίας | 8 | 32 | 51 | 74 |
| Καλαμάτα | 14 | 37 | 49 | 65 |

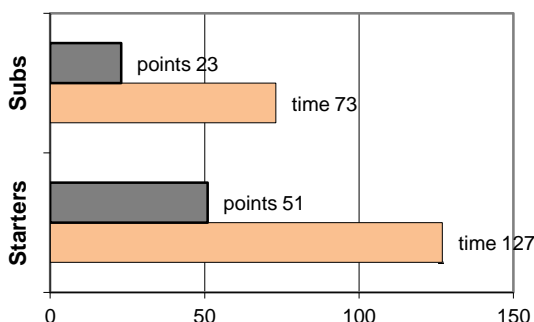


Coach: Π. Ζερβουλάκος
Γ.Ν.Ο. ΑΡΗΣ ΝΙΚΑΙΑΣ

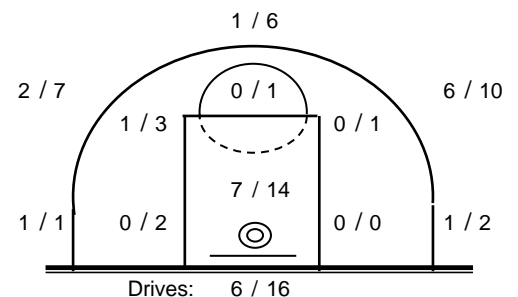
Fast Breaks 6 / 8

| # | Player | Time (min) | Points | Ft | 2p | 3p | +/- | Rebs | As | St | Tu | Bl | Fouls | Rkg* | | | |
|-------------|--------------------|------------|--------|-------|---------|---------|---------|------|----|----|----|----|-------|------|----|----|----|
| | | | | | | | | de | of | | | | Wo | Co | | | |
| 16 | Κρισωτάκης Ελ. | 19 | 14 | 3 / 4 | 1 / 5 | 3 / 6 | 5 | 4 | 2 | 1 | 0 | 0 | 1 | 2 | 3 | 14 | |
| 5 | Γαλίτης Μ. | 11 | 6 | 0 / 0 | 0 / 1 | 2 / 2 | 7 | 0 | 0 | 1 | 4 | 1 | 0 | 1 | 5 | 9 | |
| 6 | Αλεξανδρόπουλος Χ. | 22 | 2 | 0 / 0 | 1 / 6 | 0 / 2 | 5 | 5 | 0 | 0 | 1 | 1 | 1 | 0 | 1 | 1 | |
| 7 | Βασιλακάκης Ευ. | 1 | 0 | 0 / 0 | 0 / 0 | 0 / 0 | -3 | 0 | 0 | 0 | 0 | 0 | 0 | 0 | 1 | - | |
| 8 | Γούνης Ι. | 17 | 0 | 0 / 0 | 0 / 0 | 0 / 2 | 3 | 1 | 0 | 1 | 3 | 0 | 0 | 2 | 2 | 3 | |
| 9 | Πορτελάνος Αν. | 13 | 3 | 0 / 0 | 0 / 0 | 1 / 1 | -5 | 2 | 0 | 0 | 2 | 0 | 1 | 3 | 3 | 3 | |
| 10 | Κρητικός Γ. | 33 | 16 | 4 / 4 | 3 / 7 | 2 / 6 | 9 | 5 | 1 | 7 | 1 | 2 | 0 | 4 | 2 | 20 | |
| 11 | Κόλλιας Σ. | 31 | 15 | 1 / 5 | 7 / 13 | 0 / 0 | 19 | 5 | 5 | 1 | 0 | 1 | 1 | 4 | 3 | 16 | |
| 12 | Χατζόγλου Π. | 6 | 0 | 0 / 0 | 0 / 0 | 0 / 1 | -5 | 2 | 0 | 1 | 0 | 0 | 0 | 0 | 0 | - | |
| 13 | Χατζόβουλος Ηρ. | 12 | 1 | 1 / 2 | 0 / 2 | 0 / 0 | 9 | 2 | 1 | 0 | 0 | 0 | 1 | 1 | 1 | 2 | |
| 14 | Σιδεράς Ν. | 2 | 0 | 0 / 0 | 0 / 0 | 0 / 0 | -5 | 0 | 0 | 0 | 0 | 0 | 0 | 0 | 2 | - | |
| 15 | Παπουσιής Ν. | 33 | 17 | 4 / 5 | 2 / 3 | 3 / 6 | 6 | 4 | 3 | 1 | 4 | 4 | 2 | 3 | 0 | 22 | |
| Team | | | | | | | | 0 | 0 | | | | 2 | 0 | 0 | | |
| 1st quarter | | | 8 | 4 / 7 | 2 / 7 | 0 / 5 | | 8 | 2 | 1 | 3 | 4 | 1 | 7 | 5 | 6 | |
| 2nd quarter | | | 24 | 1 / 2 | 4 / 8 | 5 / 10 | | 5 | 3 | 5 | 3 | 2 | 1 | 3 | 7 | 29 | |
| 3rd quarter | | | 19 | 4 / 6 | 3 / 10 | 3 / 6 | | 11 | 6 | 2 | 1 | 5 | 3 | 3 | 5 | 25 | |
| 4th quarter | | | 23 | 4 / 5 | 5 / 12 | 3 / 5 | | 6 | 1 | 5 | 6 | 2 | 1 | 5 | 6 | 30 | |
| Final Stats | | | 200 | 74 | 13 / 20 | 14 / 37 | 11 / 26 | 45 | 30 | 12 | 13 | 13 | 13 | 6 | 18 | 23 | 90 |
| | | | | 65% | 38% | 42% | | 42 | | | | | | | | | |

Starters- Subs ratio



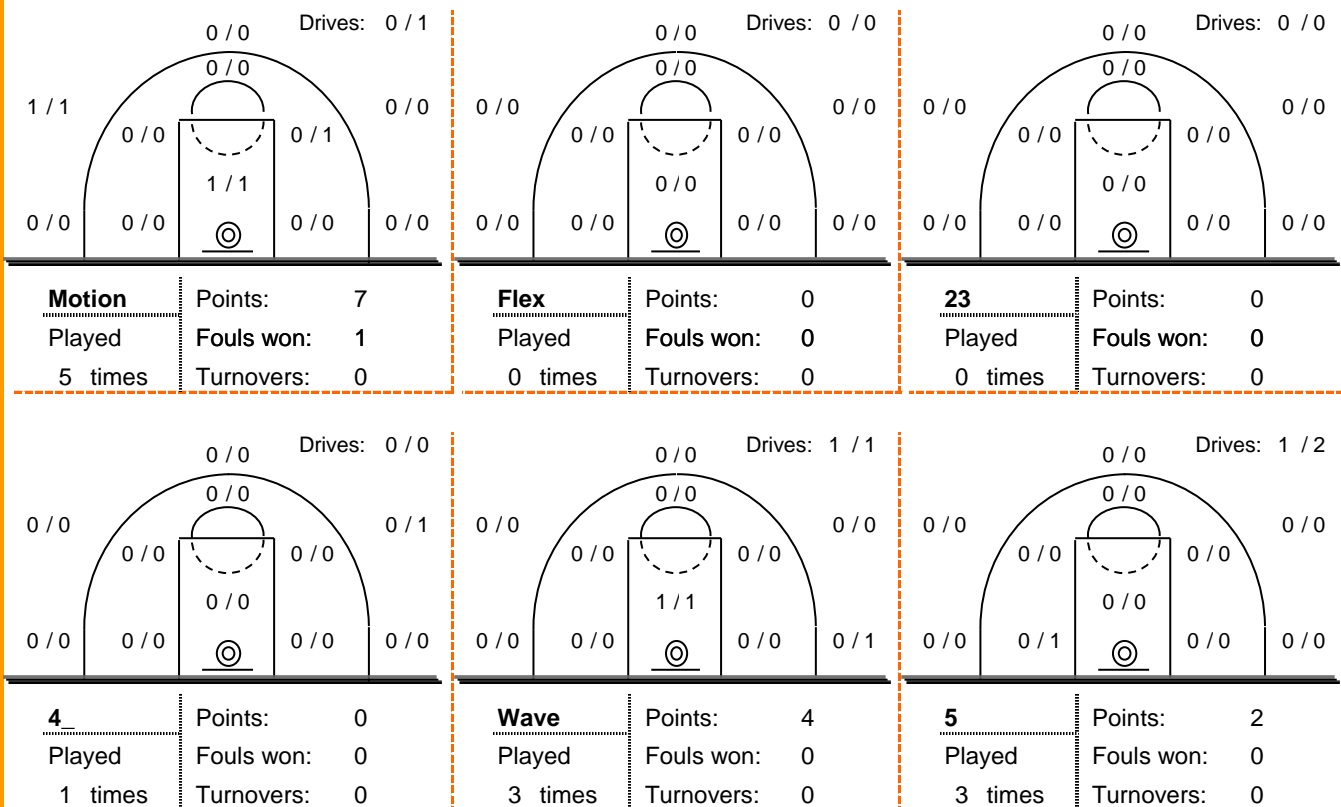
Shot Chart



*Ranking= Pts+Rebs+As+St+B-Mished Shots-Tu (Time Played>7min.)

Offense Analysis

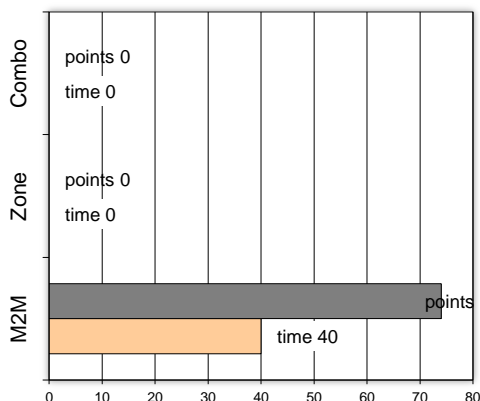
Play performance:



Against Defense Types:

Turnovers:

Fast breaks:



Έγιναν 13 λάθη
0 ήταν χρονικές υπερβάσεις,
0 ήταν παραβάσεις γραμμών,
11 ήταν λάθη κατοχής και
2 ήταν βήματα ή μεταφορά.

Επετεύχθησαν 6 αιφνιδιασμοί
4 ήταν πρωτεύοντες
0 ήταν δευτερεύοντες
2 προήλθαν από λάθος
του αντιπάλου

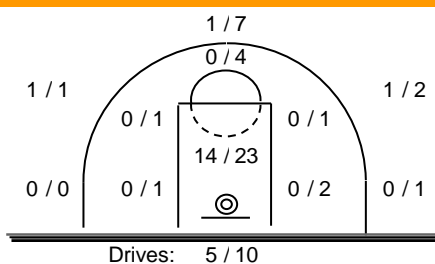
Πραγματοποιήθηκαν συνολικά 85 επιθέσεις, με απόδοση 0.87 έναντι 80 επιθέσεων των αντιπάλων.

Defense Analysis

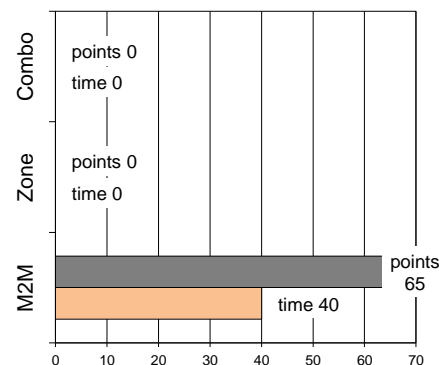
Καλαμάτα

| | | |
|----|-------------------|-------|
| 4 | Μιχόπουλος Μ. | 0 |
| 5 | Τζιλιανός Ν. | 0 |
| 6 | Γκοντόπουλος Α. | 9 |
| 7 | Πεζός Δ. | 7 -1 |
| 8 | Σιδέρης Κ. | 0 |
| 9 | Μαθιόπουλος Γ. | 3 -1 |
| 10 | Γιαννουκάκης Γ. | 3 |
| 17 | Μπάκας Γ. | 18 |
| 12 | Καλογερόπουλος Δ. | 12 |
| 13 | Κοντόπουλος Κ. | 2 |
| 14 | - | 0 |
| 15 | Γιαννακόπουλος Δ. | 11 -1 |

Opponent's shot chart

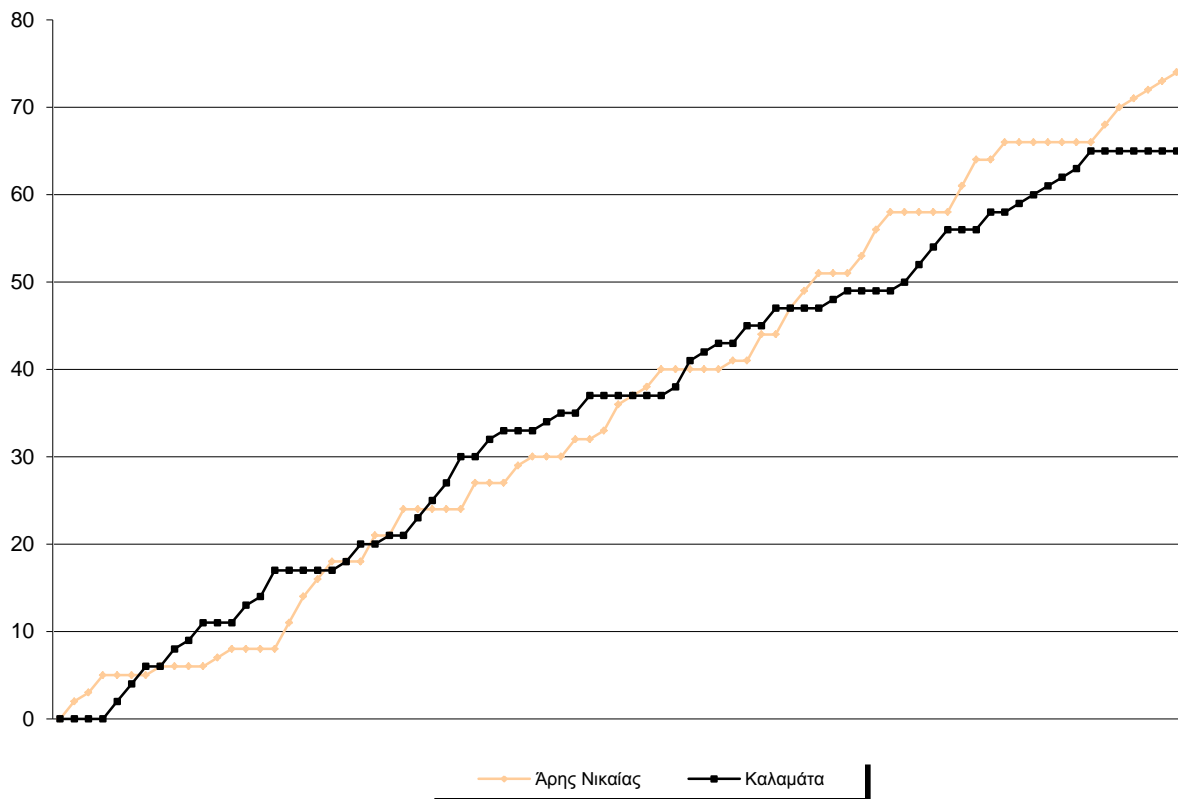


Defense Types Performance

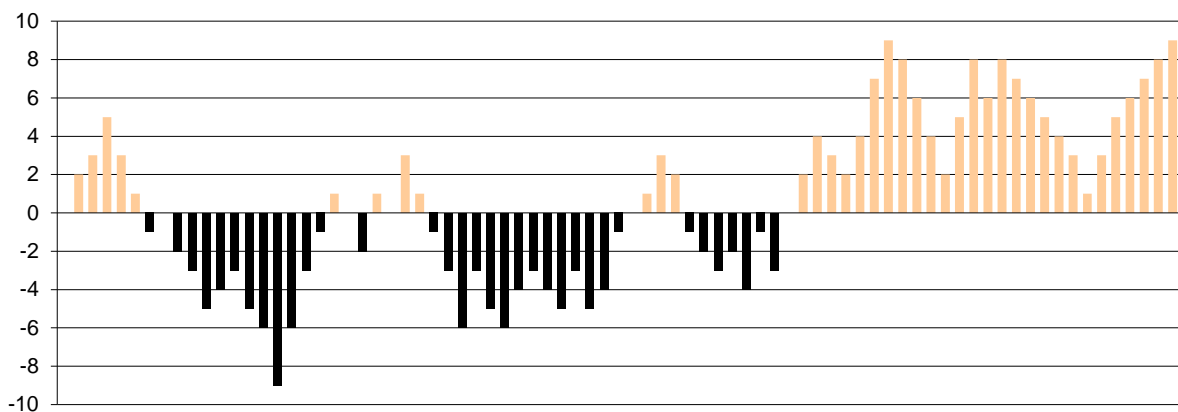


Graphic Stats

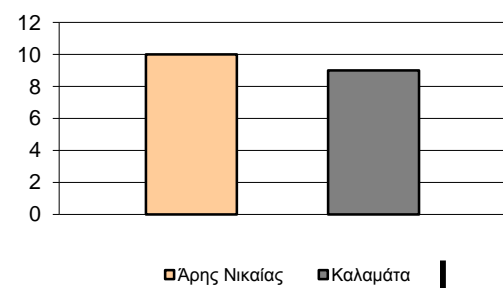
Score Evolution



Score Difference



Largest Scoring Run



Notes

2'57" πριν το τέλος του αγώνα ο Γαλίτης αποβλήθηκε με disqualifie (2 τ.π.).